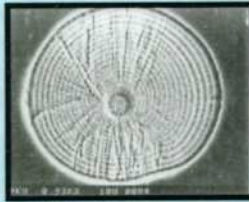


# Early Life History of Tarpon



Transparent larvae live in the open ocean



The rings in their ear bones (otoliths) indicate they move onshore after about 20 days. These "diaries" indicate that adults spawn during full moon periods in summer



1"- long larvae migrate to inlets (hurricanes and storms can help them!)



In the estuary, they metamorphose into 3/4"- long juveniles



These juveniles live in stagnant, swampy marshes at the upper reaches of Florida's estuaries



The Florida marshes are **THE ONLY** nurseries for tarpon in the U.S.

After 1 year in the marsh, 12"- long tarpon move into coastal rivers and lagoons



For more info on tarpon research, contact Jon Shenker  
321-674-8145; shenker@fit.edu